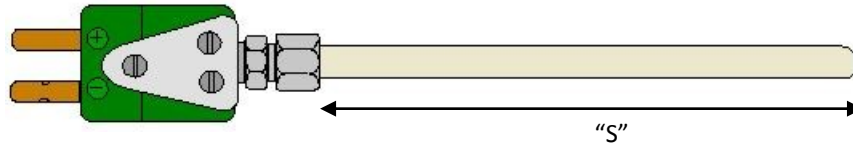


# PLATINUM CERAMIC PROTECTION THERMOCOUPLE

NC STYLE

- HIGH TEMPERATURES UP TO 3000°F
- 'R' & 'S' AVAILABLE IN  $\pm 0.1\%$  OF READING
- 'B' AVAILABLE IN  $\pm 1.0\%$  ONLY
- CALIBRATED PROBES AVAILABLE TRACEABLE TO NIST



ASSEMBLY NO.

|  |    |  |  |  |   |  |   |  |   |   |  |  |
|--|----|--|--|--|---|--|---|--|---|---|--|--|
|  | NC |  |  |  | 7 |  | 0 |  | A | 0 |  |  |
|--|----|--|--|--|---|--|---|--|---|---|--|--|

CALIBRATION

R = Pt-13% Rhodium/Pt 100%  
S = Pt-10% Rhodium/Pt 100%  
B = Pt-30% Rhodium/  
Pt-6% Rhodium

DIAMETER

7 = .250"  
8 = .188"

SHEATH LENGTH "S"

01 to 36 (whole inches)  
Consult factory for lengths over 36"

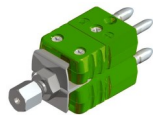
SHEATH MATERIAL

7 = Al<sub>2</sub>O<sub>3</sub> Hard Fired Protection Tube (3,000°F - 3,200°F)

JUNCTION TYPE

SINGLE ELEMENT DUAL ELEMENT

U = Ungrounded I = Ungrounded Isolated

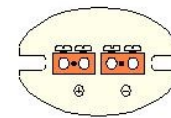


SPECIAL REQUIREMENT

If required, enter "X"  
and Consult Factory

TERMINATION OPTIONS

P = Standard Male Plug (400°F)  
J = Standard Female Jack (400°F)  
H = Hi-Temp Plug (800°F)  
R = Hi-Temp Jack (800°F)  
T = Ceramic Terminal Block



INSULATING MATERIAL

A = Al<sub>2</sub>O<sub>3</sub> Hard Fired Insulator (3,000°F - 3,200 °F)